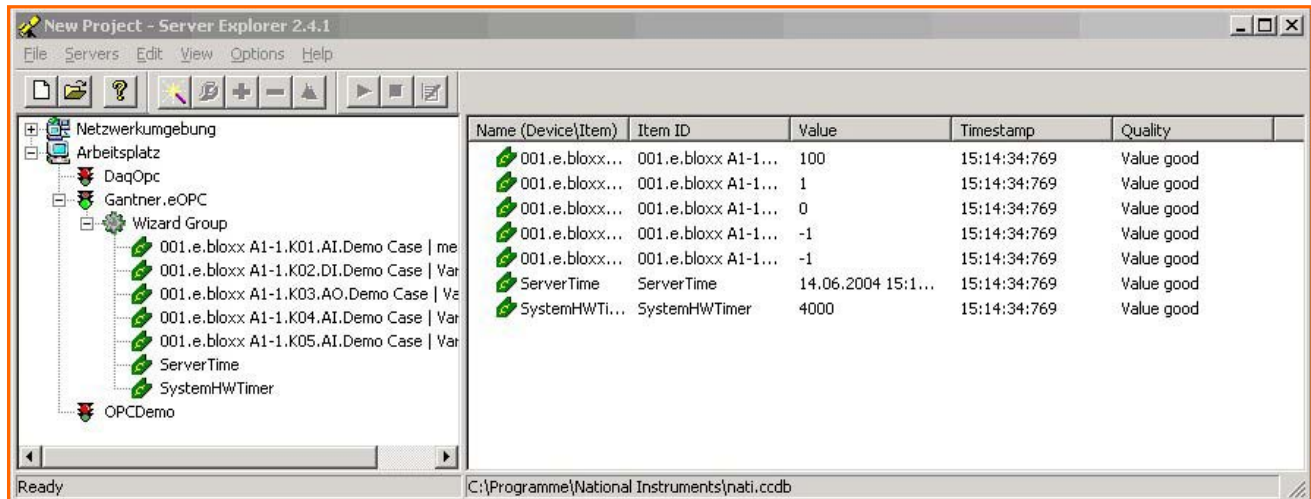


The OLE for Process Control (OPC) server e.OPC enables an easy communication with e.bloxx modules via the standardized OPC interface. The e.OPC server reads all measurement data from the e.bloxx modules configured by the ICP100 configuration software.

e.OPC provides a standard way to connect e.bloxx to OPC client applications (e.g. Custom developed Visual Basic applications, Graphical operator applications like Wonderware and The Fix, etc.).

With the e.OPC server robust data exchange with different applications can be achieved easily by the user.



**Order Information**

Product \_\_\_\_\_ Article No. \_\_\_\_\_  
 e.OPC

**Product Features**

**OPC server**

For e.bloxx Modules, ISM Modules, and IDL Data Loggers

**System requirements:**

PC Hardware:

- Pentium II 200 MHz CPU
- 128 MB RAM
- parallel Interface for dongle

PC Software:

- Windows 98, 2000, NT, XP (recommended Windows 2000 or higher)

**Compatible with any OPC client application**

**Specification:**

- Connect directly via RS-485 using the e.bloxx Localbus protocol
- No special cable required
- No I/O boards required
- Baud rates internal or 2400 to 256,000

Valid from October 2006. Specification subject to change without notice