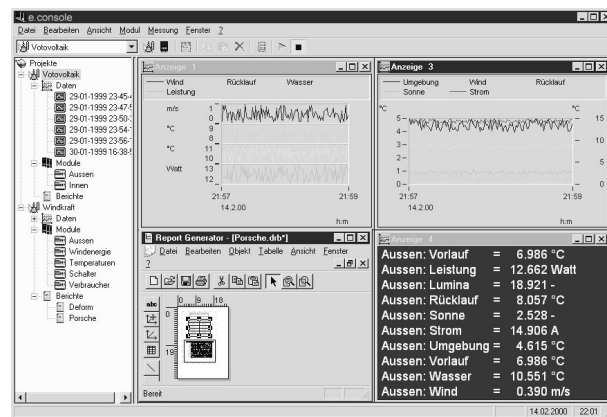


Visualizing and analyzing logged data is a key part of any data acquisition process. e.console communicates with Intelligent Data Loggers, Sensor Modules of the series ISM 100 and modules of the series e.bloxx easily via an RS 232 interface, modem, GSM or TCP/IP.

The e.console's main function is to periodically archive logged data sets and react on alarm messages sent by linked Intelligent Data Loggers and Sensor Modules. The e.console displays data both, online and offline, and offers excellent analysis tools. Logged data can also be quickly and easily linked to external databases.

- Curve Representation
- Online Values
- Automated Call Up of Data Loggers
- Modem Communication
- Excellent Analysis Tools



Ordering Information

Product	Article No.
e.console - Lite	481619
e.console - Standard	481720

Software Versions

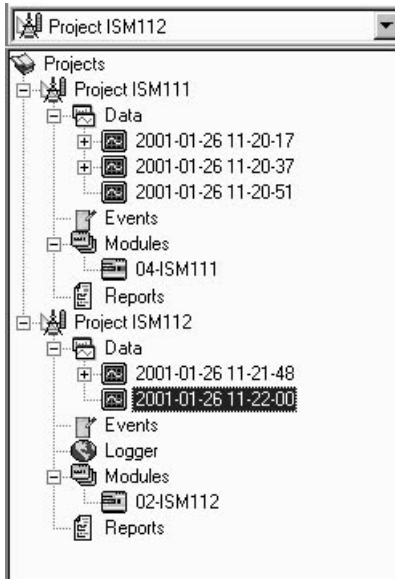
- e.console - Lite:
Evaluation software e.console is a comfortable software for online data acquisition, visualization and archiving.
- e.console - Standard:
Beside the functions of the Lite Version Data Loggers can be called up automatically at a pre-defined time to read data from its memory, modem communication is being supported as well.

Functionality

- Min. sample accuracy: 1 ms
- Project structure
- Parameter setting of the measurement channels in table representative
- Online Values
- Event protocol
- Report generator for fast documentation of measurement values
- Data export, e.g. Excel
- Linearization and real-time calculations of measurement channels
- Automated call up at pre-defined time e.g. via GSM-modem

The e.console is a project oriented visualization and evaluation software, which correlates with the structure of the Windows® Explorer and therefore a well done clearness could have been realized.

The e.console enables a simultaneous representation of several projects, which themselves consist of the elements being described below. Those elements consist of other sub-points to have all the entries well displayed.



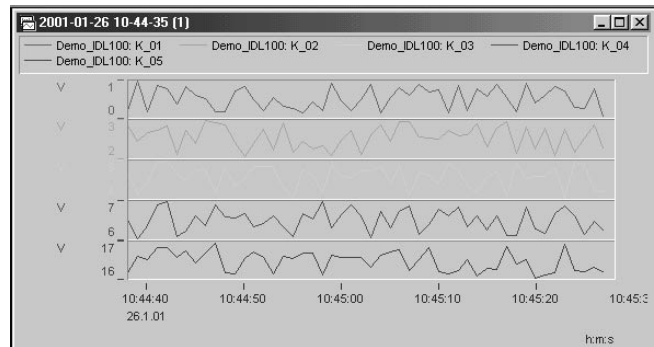
PROJECT

With e.console several projects, which are independent from each other, can be defined. Depending on the requirements of the application the necessary project can be selected.

REPORTS

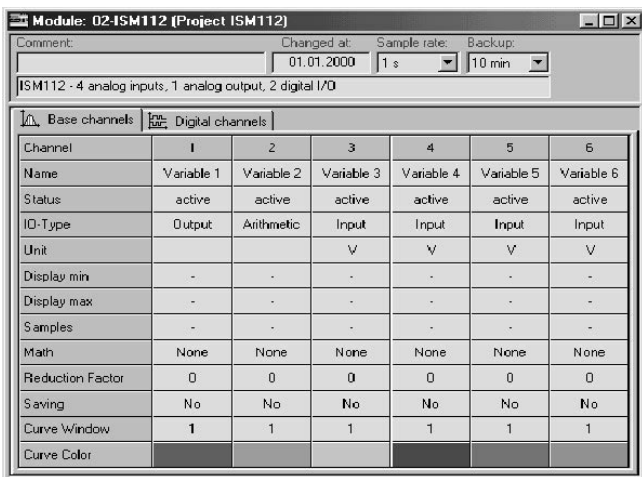
Information about the measurements can be added to the reports. This way data acquisitions will be documented individually and information are available for further evaluations.

DATA



In this point data are being stored for each measurement. For each measurement a new file will be created which is being marked with date and time of the data acquisition.

MODULE



This point shows all the modules existing in the application. As soon as one module is being marked the parameter settings appear in a table-form.

EVENTS

Here an event protocol is being stored which shows all the changes and happenings during a measurement. E.g. the start and end of a measurement are being added as well as an interference,... This protocol cannot be changed by the user.

LOGGER

The settings for the automated logger-call up are being done in this element. All the necessary information are being displayed in a table. This symbol only appears when using this functionality.

Valid from 26th February 2003. Specification subject to change without notice.

www.gantner.com

Gantner Electronic GmbH
 Montafonerstraße 8 • A-6780 Schruns/Austria
 Tel.: +43 (0)5556 73784 0 • Fax: +43 (0)5556 73784 70
 E-Mail: instrumentation@gantner.com

Gantner
 technologies